

Process step outside of S1

Start / End of process

Continue to the following page

Process step to be taken in S1

Information only

Decision to make

Admin teams:
Fareham & Gosport – Joanne Jones & Janet Benjafield, Alpha Court (SEN TEAM 5)
 snhs.fandgpaedhcp@nhs.net Tel no: 0300 123 6635
Havant & Petersfield – Morag Nightingale & Natalie Efford, Fort Southwick (SEN TEAM 6)
 snhs.havantpaedhcp@nhs.net Tel no: 0300 123 6634
Portsmouth – Wendy Cornwall
Southampton – Sue Spratt
Hampshire West -

Quality Reviewers/Clinical Co-ordinators:
 EHCP Hampshire East – Gemma Moore & Carol Quint – send tasks to unit
 EHCP Hampshire West – Karen Brown – send tasks to unit
 EHCP Southampton – Polly Sadler – send tasks to Solent West Children’s Therapy unit
 EHCP Portsmouth – Neil Smith- send tasks to Solent East Childrens Therapy unit

Waiting lists:
 WAITLIST - EHCP 1st Letters Hampshire East
 WAITLIST - EHCP 1st Letters Hampshire West
 WAITLIST - EHCP 1st Letters Southampton
 WAITLIST - EHCP 1st Letters Portsmouth
 WAITLIST - EHCP Go ahead received Hampshire East
 WAITLIST - EHCP Go ahead received Hampshire West
 WAITLIST - EHCP Go ahead received Southampton
 WAITLIST - EHCP Go ahead received Portsmouth
 WAITLIST - EHCP Conversions/Transfers Hampshire East
 WAITLIST - EHCP Conversions/Transfers Hampshire West
 WAITLIST - EHCP Conversions/Transfers Southampton
 WAITLIST - EHCP Conversions/Transfers Portsmouth

Caseloads:
 EHCP Hampshire East
 EHCP Hampshire West
 EHCP Southampton
 EHCP Portsmouth

Configuration:
 Service offered: EHCP
 Referral in reason: EHCP Health contribution
 Discharge intervention: Discharged – EHCP Information provided;
 Discharged – EHCP Information not required
 Activities: EHCP; EHCP Go ahead started; EHCP Health contribution report sent

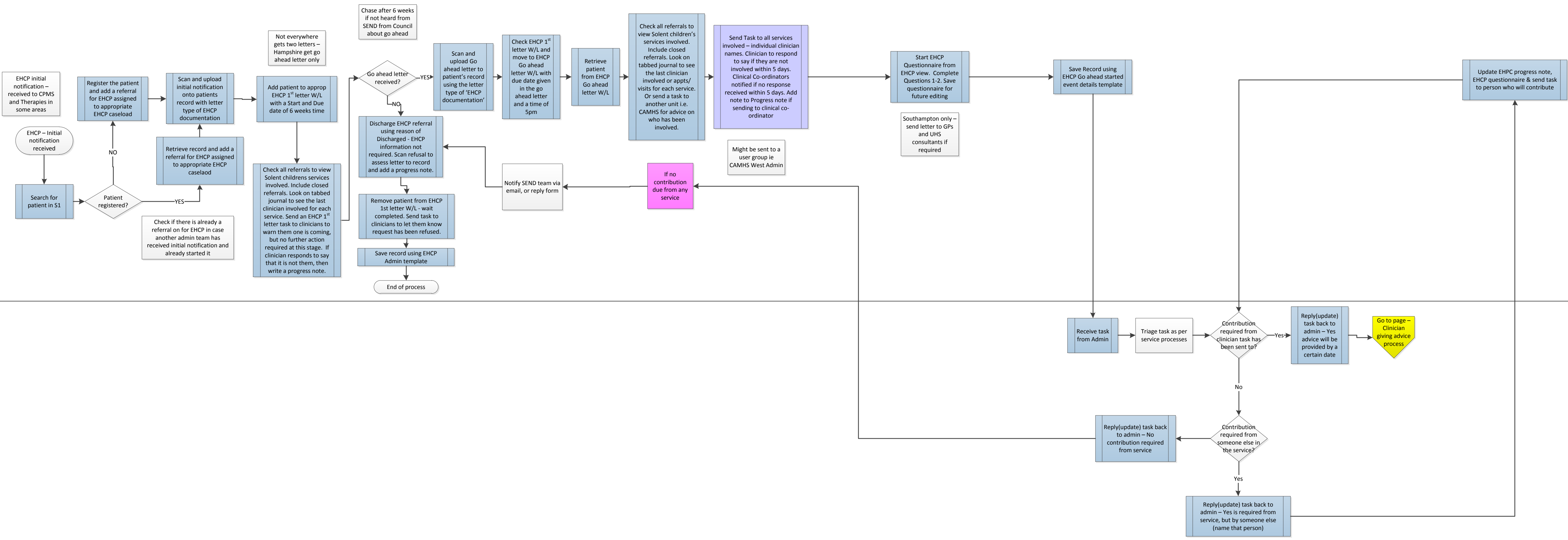
 Questionnaire EHCP (built in Solent Trust reporting unit)
 Progress Note EHCP (built in Solent Trust reporting unit)
 EHCP View (built in each unit, but exported to S1 config folder under EHCP in Childrens folder)
 Report EHCP (built in Solent West CPMS unit)

EHCP process To Be – Initial notification received

22Aug2017 v 6.0

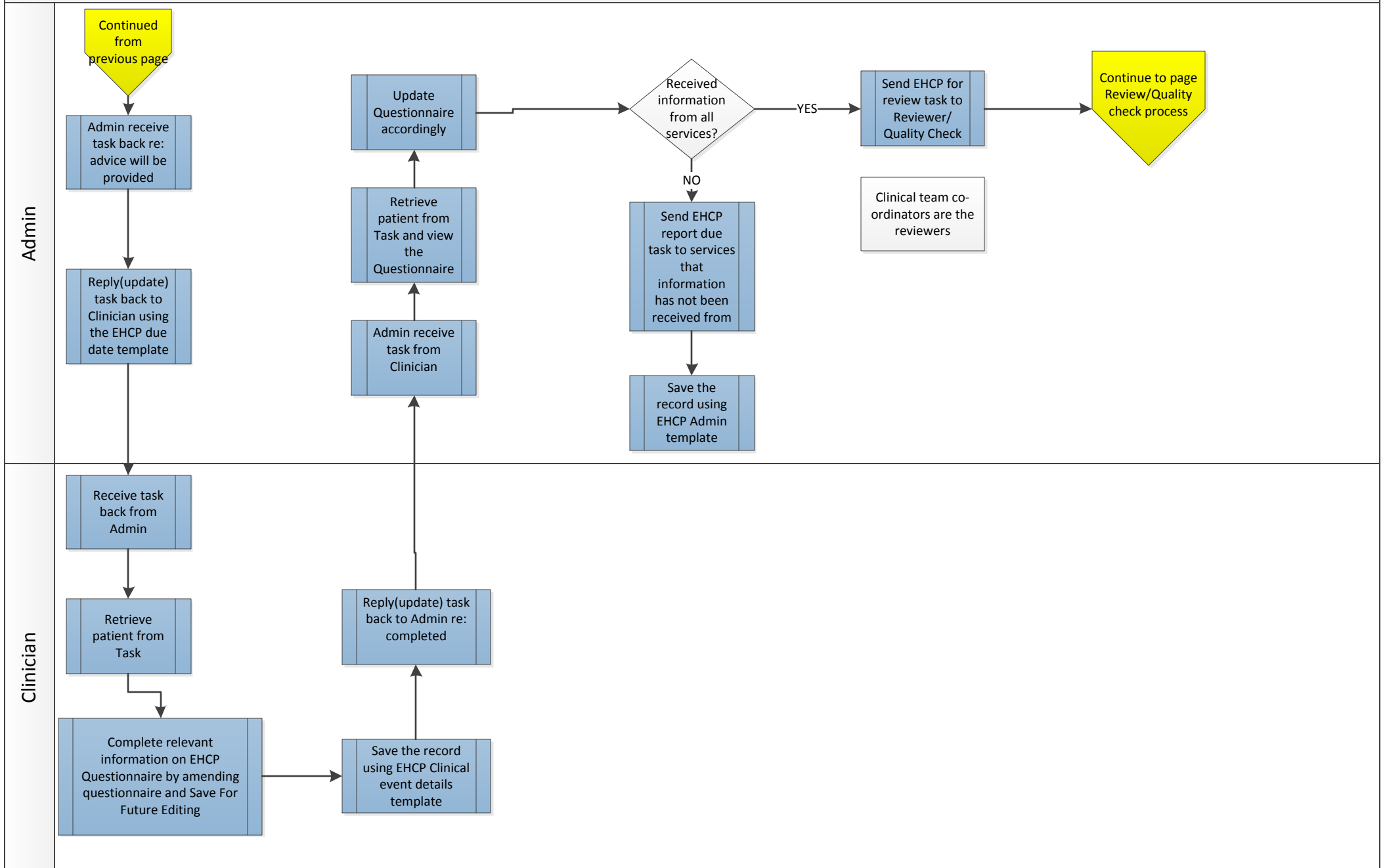
Admin

Clinician



EHCP process To Be – Clinician giving advice

22Aug17 v6.0



EHCP process To Be – Review/Quality check process

22Aug17 v6.0

